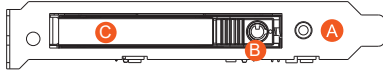


RAIDON

PC04-EZ 快速安裝導引

產品示意圖與配件表

前視圖



- A LED 指示燈 B 頂出按鍵 C 硬碟抽取盒把手

打開包裝外盒後，包裝內容應包含下列組件：

PC04 主體 x1(內含抽取盒 x1)		
快速安裝導引 x1	鑰匙	螺絲

- 請先確認相關配件與產品本身是否有受損或是缺少配件，若有任何疑問，請與您的經銷商或業務人員聯絡。
- 請前往官網 (www.raidon.com.tw) 下載說明書、驅動程式以及其餘相關資源。



v1.0(Sep. 2022)

1

燈號說明

狀態	M.2 SATA 讀取燈
無 M.2	OFF
資料存取	藍燈恆亮
M.2 閒置	藍燈恆亮

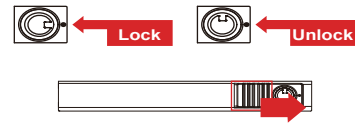
註 1：依據使用的SSD會有不同的燈號狀態。

註 2：如SSD有支援，資料存取時LED有閃爍功能；如無支援，則無閃爍功能。

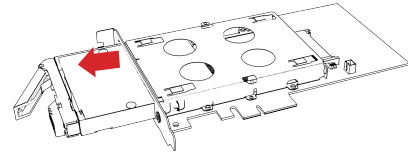
硬體安裝

請參照下列步驟，完成 PC04 的硬體安裝：

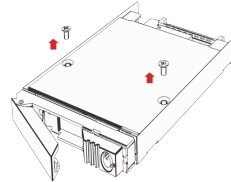
1. 請使用零件包內附的鑰匙解鎖硬碟抽取盒鎖，將頂出按鍵向右推移。



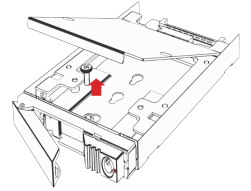
2. 硬碟抽取盒把手會彈開，即可取出抽取盒。



3. 取出抽取盒上蓋的螺絲，再撬開上蓋並移除。

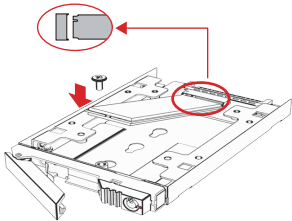


4. 取出固定 M.2 位置的螺絲。

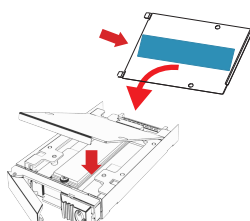


2

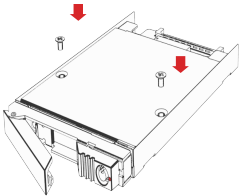
5. 插入 M.2 並鎖上螺絲。



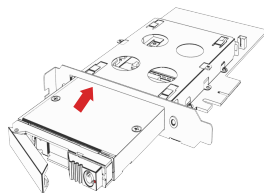
6. 蓋回上蓋。



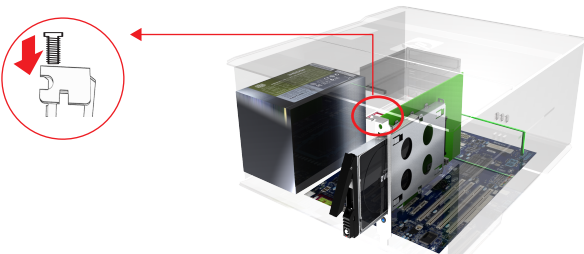
7. 鎖上螺絲。



8. M.2 安裝完成後，請將抽取盒平移放入 PC04 內，並關上把手。



9. 將產品安裝於電腦機殼上主機板PCI-E插槽位置，鎖上螺絲。安裝完成後，開啟電源，再透過作業系統進行後續格式化設定。完成硬碟格式化後，便可以進行資料的讀寫。



3

產品使用注意事項

- 硬碟格式化後的可用儲存容量會小於硬碟標示的容量。
- PC04-EZ不支援硬碟熱插拔功能，請先關閉系統電源後再移除硬碟。
- 強烈建議除了使用 PC04 的資料儲存功能外，請針對重要資料備份到另一個儲存裝置上或遠端備份，雙重備份您重要的資料。若您儲存在 PC04 的資料損毀或遺失，Raidon 將不負任何的責任。

感謝您使用 銳鉸科技股份有限公司 的產品。

本手冊裡的資訊在出版前雖然已經被詳細確認，但實際產品規格將已出貨時為準；任何的產品規格或相關資訊更新，請您直接上 www.RAIDON.com.tw 網站查詢，或直接與您的業務聯絡窗口聯繫，本公司將不另行通知。

如果您對 銳鉸科技 的產品有任何疑問，或是想獲得最新產品訊息、使用手冊或軟體，請您聯絡 supporting@raidon.com.tw，我們將儘速回覆您。

RAIDON 為 銳鉸科技股份有限公司 旗下品牌之一
本說明相關產品內容歸 銳鉸科技股份有限公司 版權所有

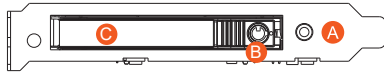
4

RAIDON

PC04-EZ Quick Setup Guide

Product Illustration and Parts List

Front View



- A** HDD access light **B** Removable drive tray **C** HDD Tray Ejection

The following items should be inside the package upon opening:

PC04 product x1 (containing HDD enclosure x1)		
Quick setup guide x1	KEY	Screws

- Please check the product and accessories for any defect or missing parts. If you have any questions, please contact your product supplier.
- Please go to the official website (www.raidon.com.tw) to download manuals, drivers and other related resources.



v1.0(SEP. 2022)

1

The Indication of HDD Status

Status	M.2 SATA access light
No M.2	OFF
Data access	Blue light always on
M.2 idle	Blue light always on

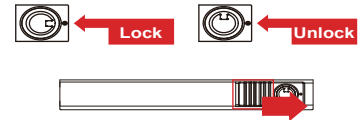
Note1: While using a different SSD Hard Drives, the LED Indication might be with a different light set.

Note2: If the SSD is supported, the LED has a flashing function during data access; if there is no support, there is no flashing function.

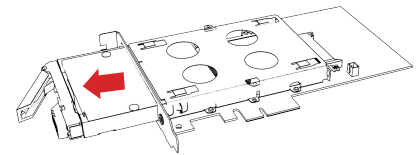
Hardware Installation

Please follow the instructions below to complete the hardware installation.

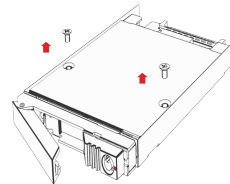
1. Unlock the M.2 SATA Bridge Tray Key Lock and push the HDD tray ejection to the right.



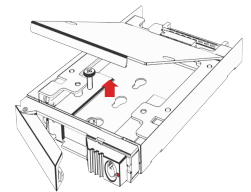
2. Pull out the M.2 SATA Bridge Tray.



3. Remove the screws of the upper cover of the M.2 SATA Bridge. and Open the upper cover.

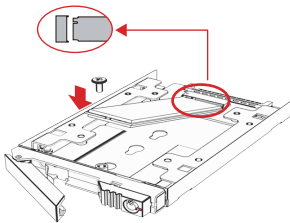


4. Remove the screws holding the M.2.

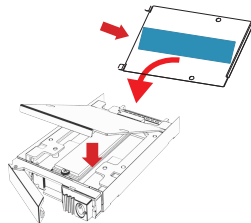


2

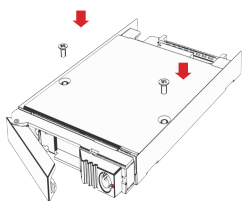
5. Insert M.2 and fix the screw.



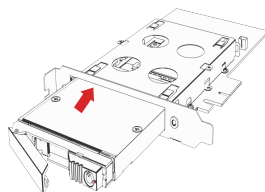
6. Put the upper cover back.



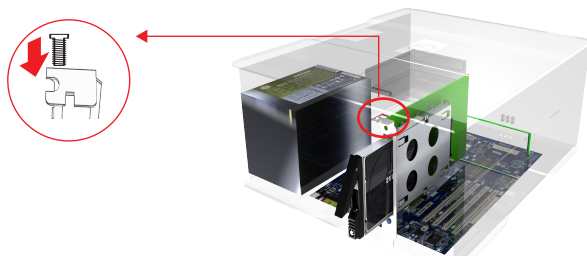
7. Fix the screws.



8. Install the M.2 SATA Bridge tray back into the PC04.



9. Install the product in the PCIe slot of the motherboard on the computer case, fix the screw.
After the installation is complete, turn on the power supply and perform subsequent formatting settings through the operating system. After the hard disk is formatted, data can be read and written.



3

Important Notice

1. The usable storage capacity of the hard disk after formatting will be less than the capacity indicated on the hard disk.
2. PC04-EZ does not support hot-swap function, please power off the system before remove the disk.
3. We strongly recommend backing up important data stored on the PC04 to another storage device or a remote site. Raidon will not be held liable for the damage or loss of data you stored on the PC04

Thank you for choosing RAIDON's product.

The information provided in this manual was checked before publication, but the actual product specifications may have changed before shipping; Latest product specifications and updates can be found at www.RAIDON.com.tw or through your sales representative. No separate notifications will be provided by our company.

If you have any questions about RAIDON products or would like to receive the latest product information, instruction manuals, or firmware, please contact Supporting@raidon.com.tw for assistance.

RAIDON is one brand under RAIDON TECHNOLOGY, INC.
All product-related content in this manual are copyrighted by
RAIDON TECHNOLOGY, INC.

4